

200 ATJ



The working area

Working height	20.00 m
Platform floor height	18.00 m
Max. outreach	12.00 m
Up and over clearance	8.00 m
Basket rotation	+90°/-90°
Turret rotation	355°



The platform

Capacity	230 kg
External use	45 km/h
Basket size	2.10 m x 0.80 m



The overall dimensions

① Width	2.40 m
② Length	8.50 m
③ Length (Travel/transport)	6.30 m
④ Height	2.70 m
⑤ Height (Travel/transport)	3.15 m



The movements

⑥ Inside turning radius	1.30 m
⑦ Outside turning radius	3.95 m
⑧ Outside turning radius with basket	7.45 m
⑨ Ground clearance	43 cm
⑩ Wheelbase	2.40 m
Working speed (km/h)	0.8 km/h
Maximum travel speed (km/h)	4.7 km/h



The diesel engine

KUBOTA V 2403 M	45 cv
-----------------------	-------



The Rough Terrain capabilities

Gradeability on rough terrain	40%
Max. slope accepted	5° or 9%



Hydraulic tank

Diesel tank



Tyres



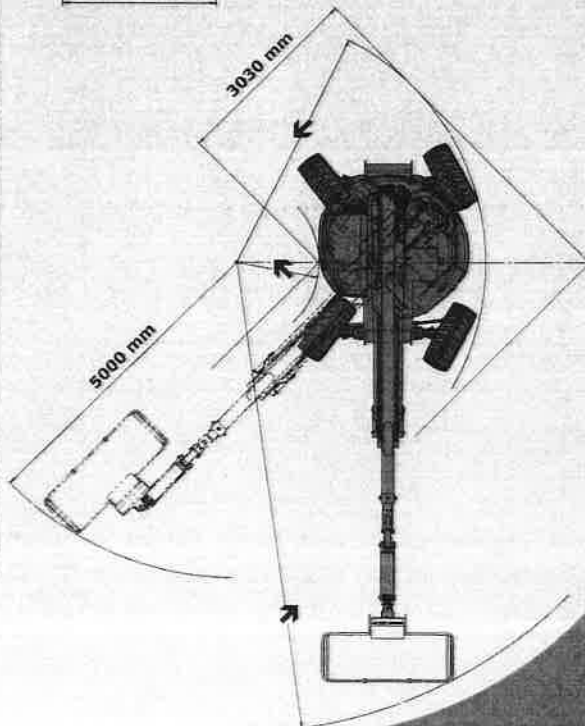
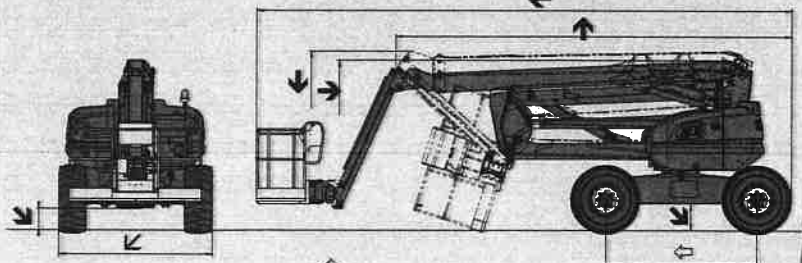
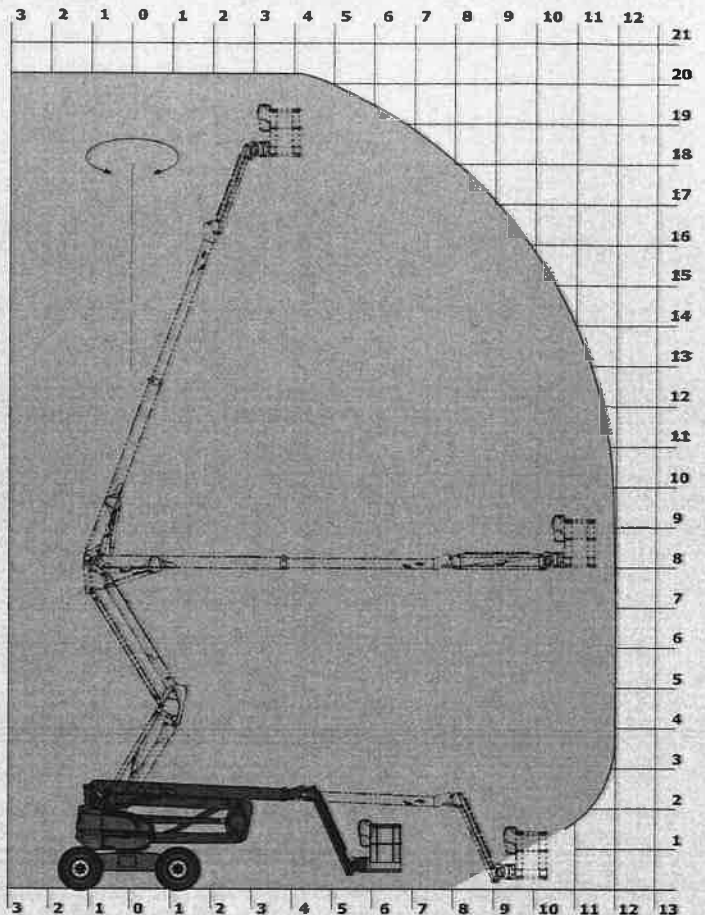
Weight

Standard equipment

- Proportional controls
- 4 simultaneous movements
- Foam filled tyres
- Differential lock
- Limited-slip front axle
- Diagnostic-calibrator
- Hourmeter
- Low-fuel indicator
- Horn
- Flashing beacon
- Audible and visual tilt and overload alarms
- Slope over ride
- Lifting eyes
- Electric emergency pump
- Prefitted for 230 V
- Dead man's pedal
- Tool tray
- Protective cover (lockable)

Options

- Continuous rotation
- Oscillating axle
- 230 V outlet with residual current device
- On-board generator (230 V or 110 V)
- Working headlight
- Cold countries kit
- Compressed air predisposal
- Water predisposal
- Refinery kit
- Battery 145 Ah or 160 Ah



The specifications given are not binding to the manufacturer and can be modified without prior notification. The equipment shown in this leaflet may be standard, optional or unavailable depending on the version. For further details, please contact your MANITOU dealer. Complies with the machine directive (EN 280) and standards in the countries where the machine is delivered.



MANITOU BF SA

B.P. 249 - 44158 Ancenis Cedex - France
Tel. : 33 2 40 09 10 11 / Export Department Fax : 33 2 40 09 10 97
www.manitou.com

700431EN-A - 10/08

