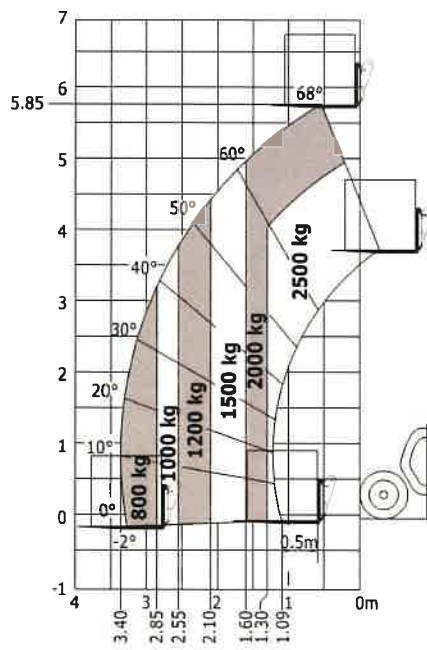


Load chart



Capacities	Metric
Max. capacity	2500 kg
Max. lift height	5.85 m
Bucket breakout force	3427 daN
Weight and dimensions	
l2 - Overall length of fork carriage	3.90 m
b1 - Overall width	1.81 m
h17 - Overall height	1.92 m
y - Wheelbase	2.30 m
m4 - Ground clearance	0.33 m
b4 - Overall cab width	0.79 m
Wa1 - Frame outer turning radius	3.31 m
Unladen weight (with forks)	4800 kg
Standard tyres	Pneumatic
Standard forks	1200x125x45
Performances	
Lifting	8 s
Lowering	5.40 s
Telescope extension	5.60 s
Retracting the telescope	4.30 s
Scoop	3.50 s
Dump	3.60 s
Engine	
Brand	Kubota
Environmental standards	Stage 5
Power	75 hp / 55.40 kW
Max. torque	265 Nm at -
Laden drawbar pull	3550 daN
Transmission	
Type	Hydrostatic
Number of gears (forward/reverse)	2/2
Parking brake	Automatic negative parking brake
Service brake	Hydraulic
Hydraulics	
Type of pump	Gear pump
Hydraulic flow rate - Pressure	90 l/min - 235 bar
Tank capacities	
Hydraulic oil	115 l
Fuel	63 l
Cooling liquid	12 l
Noise & vibration	
Noise at driving position (LpA)	76 dB(A)
Noise to environment (LWA)	104 dB(A)
Vibration on hands/arms	<2.5 m/s ²
Miscellaneous	
Steering wheels / Driving wheels	4 / 4
Safety	Cab ROPS - FOPS Level 2
Controls	JSM