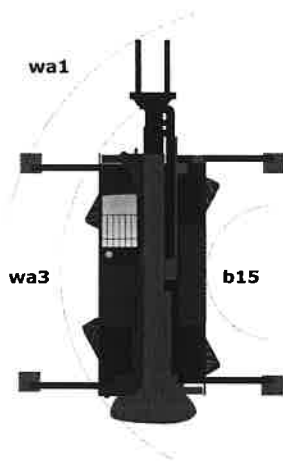
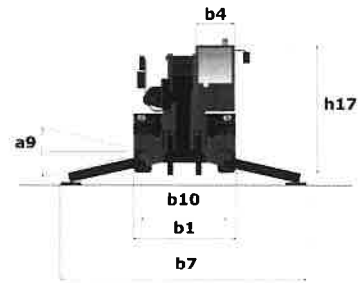
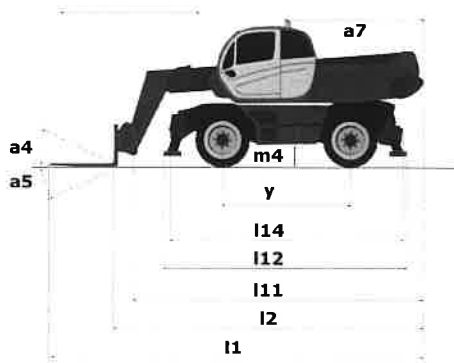
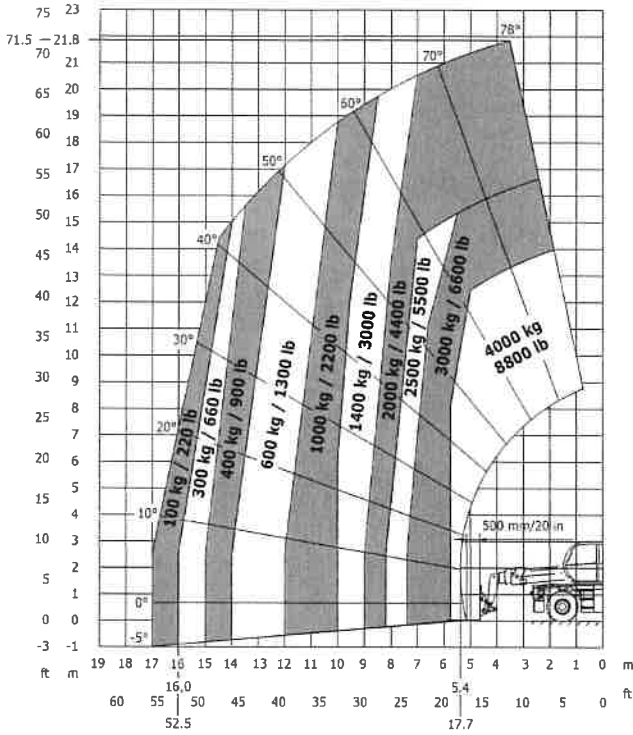


Capacities	Metric
Max. capacity	4999 kg
Max. lift height	24.70 m
Max. reach	21.40 m
Dimensions	
l2 - Length to fork heel	7.84 m
l1 - Overall length	9.03 m
b1 - Overall machine width	2.49 m
b7 - Overall width with stabilisers extended	5.55 m
h17 - Overall height	3.05 m
Wa3 - - Frame outer turning radius	5.23 m
m4 - Machine ground clearance	0.35 m
a4 - Tilt-up angle	13 °
a5 - Tilt-down angle	102 °
Standard tyres	Pneumatic
Standard forks	1200x150x50
Weight	18900 kg
Stabilisers	
Type	Telescopic Duplex
Controls	Individual or Simultaneous
Engine	
Brand	Mercedes
Environmental standards	OM 934 E4-5
Power	156 hp / 115 kW
Max. torque	675 Nm at 1500 rpm
Number of cylinders - Capacity	4 - 5130 cm ³
Injection	Direct
Cooling	by Water
Transmission	
Type	Hydrostatic
Max. speed of travel (may vary according to the applicable regulation)	40 km/h
Drawbar pull	8700 daN
Parking brake	Automatic negative parking brake
Service brake	Hydraulic
Hydraulics	
Type of pump	Gear pump
Hydraulic flow rate	115 l/min
Pressure	275 bar
Tank capacities	
Hydraulic oil	225 l
Fuel	305 l
AdBlue Diesel Exhaust Fluid (DEF)	57 l
Noise & vibration	
Noise at driving position (LpA)	77.40 dB(A)
Noise to environment (LwA)	107 dB(A)
Vibration on hands/arms	<2.5 m/s ²

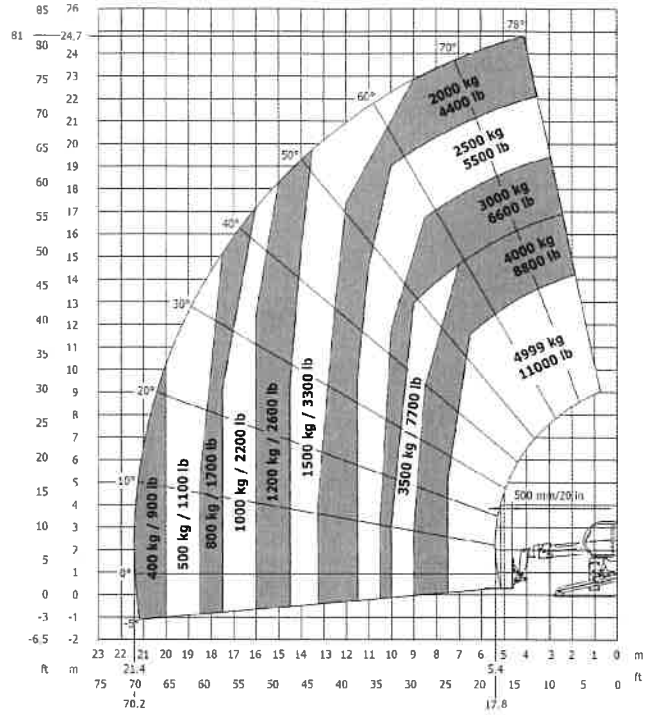


Other data	Metric
l12 - Overall length at stabilisers	5.22 m
b7 - Overall width with stabilisers extended	5.55 m
b4 - Overall cab width	0.99 m
l14 - Length of frame	5.35 m
y - Wheelbase	3.05 m
a9 - Levelling corrector	8 °
a4 - Tilt-up angle	13 °
a5 - Tilt-down angle	102 °
a7 - Counterweight offset (turret at 90°)	3.18 m
b10 - Front wheel gauge (middle of wheels)	2.05 m
Wa1 - Outer turning radius (with forks)	5.23 m
b15 - Inside turning radius	1.70 m

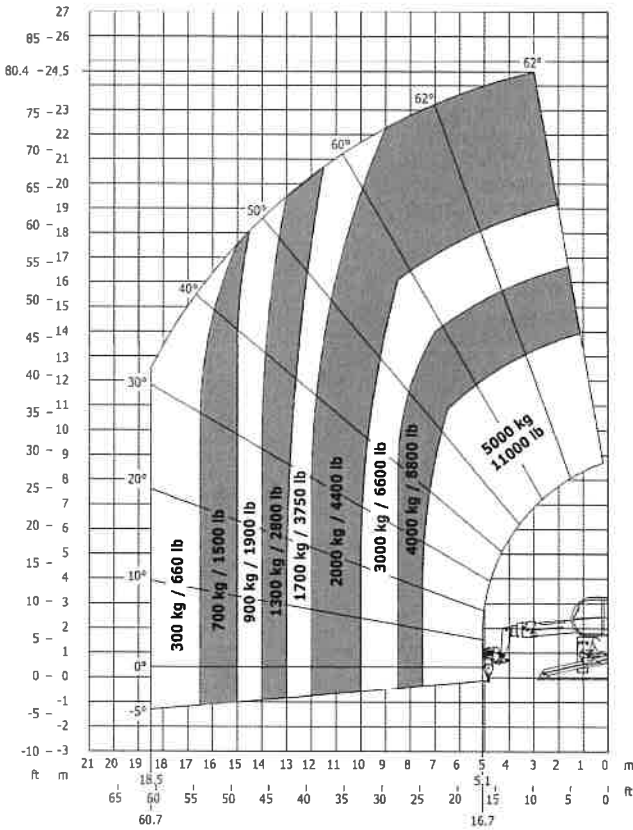
Machine on tyres with forks



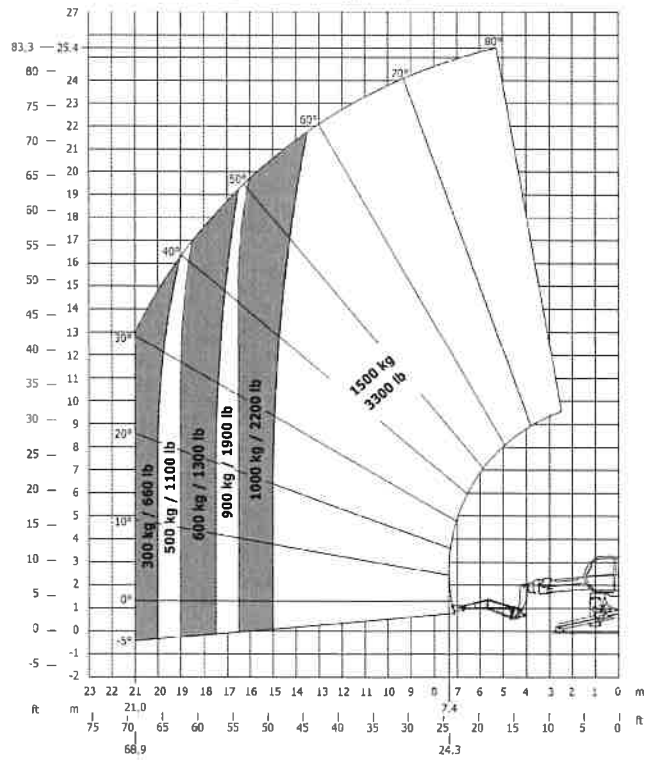
Rotation on lowered stabilisers with forks



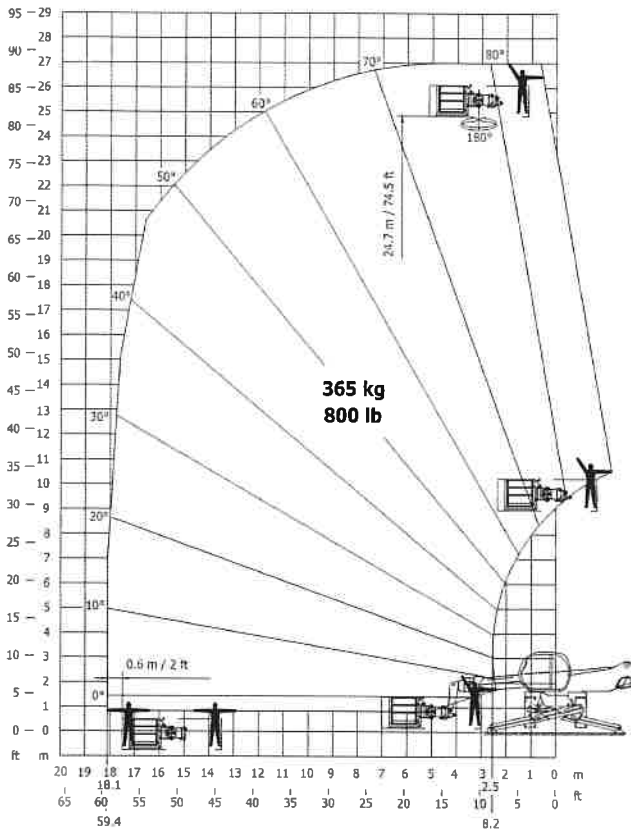
Rotation on lowered stabilisers with winch 5000 kg



Rotation on lowered stabilisers with 1500 kg jib



Rotation on lowered stabilisers with 365 kg platform



Rotation on lowered stabilisers with 1000 kg platform

